



March 9 - March 22, 2020

# OLLI This Week \ Next Week

Osher Lifelong Learning Institute at Northwestern University



## Contents

- UPDATE: NU Response to Coronavirus
- UPDATE: NU Libraries
- UPDATE: NU Shuttle
- Diversity & Inclusion Lecture
- Teen Tech Tutors in Chicago
- Leading Edge Lecture
- Upcoming Events
- Other News
- Reminder to All Members
- CH: Parking Pass Validation Machine
- EV: Construction Project in Evanston
- Emergency Procedures
- OLLI Online Help Desk
- Idea Submission Link

[2 Weeks At-a-Glance](#)

[Save the Dates March / April](#)

[Click Buttons to View & Print](#)



[Click to View Full OLLI Calendar](#)

[OLLI Online Registration System Click Here](#)

[OLLI National Resource Center - Click Here](#)

## This Week

No events scheduled at this time

**UPDATE:**  
**Northwestern's Response to Coronavirus (COVID-19)**  
 Northwestern University continues to monitor the situation on the global outbreak of

Northwestern University continues to monitor the situation on the global outbreak of Coronavirus. In an effort to keep the community informed **a dedicated website has been created which will continue to be updated with messages, advisories, and information about COVID-19.** In addition, OLLI Director Kirsty Montgomery has been in touch with SPS Dean Tom Gibbons, Luke Figura (chair of Northwestern's COVID-19 committee), and is working with the School of Professional Studies Associate Dean of Students to plan ahead in the event that the outbreak impacts our students.

To access Northwestern's Coronavirus (COVID-19) website, [Click Here](#)

To read Northwestern's policy on self-isolation, [Click Here](#)

In general, as a courtesy to your fellow members and to safeguard the health of all, if you are not feeling well (for whatever reason) and certainly if you are running a fever, please stay at home.

---

## UPDATE:

### Northwestern Library Hours Over Spring Break

Northwestern University spring break runs from March 21 through March 30. **OLLI is in session during this time.** However, the Northwestern libraries close or have reduced hours during this time. We advise you to check library hours prior to visiting. To access the Library website - [Click Here](#)

#### Schaffner: CLOSED

Any items ordered during spring break with a request to pick up at Schaffner will instead be delivered to the OLLI Chicago office for pick up that week. Schaffner will reopen with regular hours starting Tuesday, March 31 at 1:30pm. If you have any questions you can email [circulation@northwestern.edu](mailto:circulation@northwestern.edu)

**Main & Deering:** Monday-Friday 8am-6pm; Saturday 10am-6pm; Sunday CLOSED

---

## UPDATE:

### Northwestern Shuttle Changes Over Spring Break

Northwestern University spring break runs from March 21 through March 30. **OLLI is in session during this time.** However, the shuttles may be running on holiday schedules during this time. Be sure to check the shuttle website for the latest information on schedule changes while Northwestern University is on spring break. To access the Shuttle website - [Click Here](#)

---

## Next Week



OPEN TO ALL CURRENT OLLI MEMBERS

# From Hungry to Hopeful Tuesday, March 17 (CH)

12-1pm

**Location:** Wieboldt Hall, 339 E. Chicago Ave., Chicago  
*Streaming to: 500 Davis Center, Suite 700, Evanston*

Nearly half the food produced in the U.S. goes to waste. Every year, millions of families have to make the choice between paying for utilities and medicine or food. It is an all too common problem that exists across the country as well as in our own backyard. How is this possible in one of the world's wealthiest nations? Nicole Robinson, VP of Community Impact for the Chicago Food Depository, joins us to discuss the challenges faced by many Cook County families to put food on their tables. She'll shed light on the programs and local community efforts to address the root causes of hunger, end hunger in our community, and bring hope to Chicago area families in need.

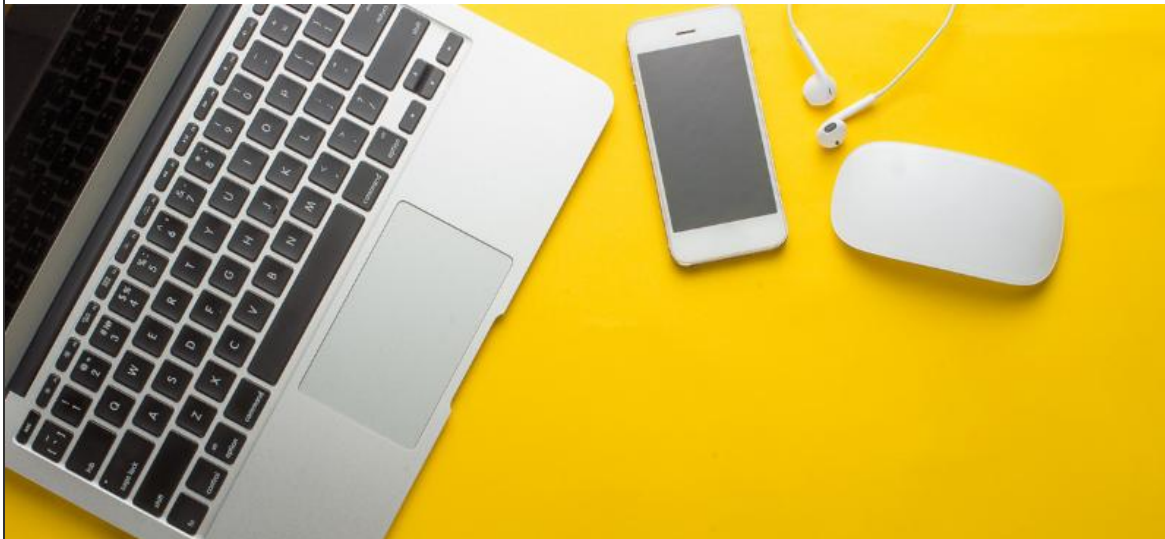


**Nicole Robinson,**  
VP Community  
Impact, Chicago  
Food Depository.

**This event is free and open to all current OLLI members.  
Registration is required.**

**REGISTER**

*A Diversity & inclusion Committee event - to enhance and expand diversity and inclusion at OLLI.*



**OPEN TO ALL CURRENT OLLI MEMBERS**

# Teen Tech Tutors Wednesday, March 18 (CH)

3:15-4:15pm

**Location:** Wieboldt Hall, 339 E. Chicago Ave., Chicago

**Member Review:**

Students from Roycemore's upper school in Evanston will be available to help! **Bring your own device - phone, laptop or tablet - and get one-on-one tech training and support.** Interested in understanding social media websites such as Facebook and Instagram or how to Skype with your grandkids? They can help with that too!

**This event is free and open to all current OLLI members. Registration is required.**

**REGISTER**

"I can now scan a QR code, have DuckDuckGo on my phone and have learned how to better manage the notifications I receive. I feel just a little more in control. And just MAYBE a little younger."

- Suzanne Farrand



**OPEN TO ALL CURRENT OLLI MEMBERS**

## End of Life: Charting Your Own Journey Thursday, March 19 (EV)

12-1pm

**Location:** 500 Davis Center, Suite 700, Evanston  
*Streaming to: Wieboldt Hall, 339 E. Chicago Ave., Chicago*

Identifying end-of-life wishes, and making sure they are respected, can be a difficult and overwhelming process. Charting the journey may include discussion and research into palliative care, hospice, or even medical aid in dying. What are the options and how can a person's wishes be ensured and honored? Amy Sherman of Compassion and Choices joins us to discuss current end-of-life choices and the advocacy work being done in Illinois and across the country to expand the options.

**This event is free and open to all current OLLI members**



**Amy Sherman** is the Midwest Regional Campaign Manager for Compassion and Choices. Previously she served as Dean of



This event is free and open to all current OLLI members.  
**Registration is required.**

served as Dean of  
Students at Northwestern  
University.

**REGISTER**

*Presented by the Academic Enrichment Committee in Evanston.*

## Upcoming Events

You can browse and register for all our upcoming events and workshops by visiting the [OLLI Online Registration System](#). Once there, click on "Browse" then "Special Events, Workshops, Lectures, & More".



### **Study Group Idea Week**

**Evanston & Chicago: March 30 - April 2**

**EV Location:** 500 Davis Center, Suite 700

**CH Location:** 339 E. Chicago Ave.

Mark your calendar and plan to join the events on campus all week including an Idea and Proposal fair in Evanston and brainstorming sessions in Chicago. **All members welcome!**



### **Noontime Lecture: The Future of Orchestras...**

**Chicago: Tuesday, March 31 at 12pm**

**Location:** 339 E. Chicago Ave.,

Liz Madeja from the Chicago Symphony Orchestra joins us to discuss the strategies and tactics that are changing the landscape of classical music consumption and the effort to expand audiences for the art form.

[Learn More](#)

## Other News

---

### **Northwestern Diversity & Inclusion Events**

A quick link to all the Northwestern community diversity and inclusion events. Northwestern encourages community members to take part in events like these to increase their cultural competency and understanding. [View All Upcoming Events.](#)

---

### **Northwestern Public Events**

## NORTHWESTERN PUBLIC EVENTS

See what is happening at Northwestern this month. Concerts, lectures, athletic events - there is always something going on. [View March Events](#).

---

## NORTHWESTERN MEDICINE

### Participants Needed for an MRI Study to Evaluate Heart Health

Study participants are need for a study testing new Magnetic Resonance Imaging (MRI) techniques to better evaluate heart health. Compensation provided. [Click here for more information](#).

Questions, contact: Brenda Herrera at [Brenda.Herrera@northwestern.edu](mailto:Brenda.Herrera@northwestern.edu)

---

### Reminder to All Members

If you have any questions or need assistance, please contact the OLLI office on either campus for help. **Do not call or go to other Northwestern departments**. They will not be able to assist you. The OLLI office should be your contact for Net-IDs, payments, room issues, parking vouchers in Chicago, Wildcards, registration and emails. The OLLI offices can be reached by email, phone, or Help Desk.

**Help Desk:** [spsolli.sps.northwestern.edu](mailto:spsolli.sps.northwestern.edu)

**CH:** [maurita.gholston@northwestern.edu](mailto:maurita.gholston@northwestern.edu) or 312-503-7881

**EV:** [l-dangelo@northwestern.edu](mailto:l-dangelo@northwestern.edu) or 847-492-8204

---

### Chicago: Parking Pass Validation Machine

Parking passes may be self-validated through a new machine located outside the OLLI office in Wieboldt Hall (Room 412). Validation is for use while attending study groups only. **Instructions on how to use the validation machine are posted next to the machine.**

The machine is available Monday -Thursday from 9am -5pm **ONLY**. Please be advised that you must exit the garage with your validated ticket BEFORE 5:30pm or you will be charged the FULL day rate of \$54.

[Click Here for more information](#).

---

### Evanston: Construction Project Information

The City of Evanston's construction project on Northwestern's Evanston campus continues. All members of the campus community are urged to use caution and leave extra time when driving or walking near the work site. For more information and update on the project from the City of Evanston - [Click Here](#)

---

Emergency Procedures and

Northwestern University Emergency

Notification System

# Notification System

## ALL MEMBERS PLEASE READ!

The start of a new semester is a great time to review campus emergency procedures. Please click below to read the Emergency Procedures for each campus. Let the office know if you have any questions.

The **Northwestern University Emergency Notification System** disseminates timely information to the campus community in the event of an emergency affecting the University. Notices are sent via email, text message, and voice message. Instructions on how to sign up for this system can also be found in the linked document.

[CLICK HERE!](#)

# OLLI Online Help Desk

Simply click the link below, submit a 'ticket' and help will be on the way. **Watch your email** for a reply from an OLLI staff member - you may be asked to supply additional information.

## Members:

if you need to make a schedule change, need help with your NetID or need to request a refund simply fill out a ticket.

## Coordinators:

if you need to request a room or equipment (including microphones, audio/visual, etc.), need a canvas site, or tech support simply fill out a ticket.

[CLICK HERE!](#)

# Submit Study Group Ideas All Year

Submit ideas you have for study groups any time, day or night! Simply click below and fill out our new online form. Show your support in helping to create an engaging and dynamic offering of study groups at OLLI by submitting ideas whenever you think of them. **All Ideas welcome!**

[CLICK HERE!](#)

**Questions?** Email the Study Group Committee [ollistudygroupcommittee@northwestern.edu](mailto:ollistudygroupcommittee@northwestern.edu)

**THE END**

Northwestern | SCHOOL OF PROFESSIONAL STUDIES

[sps.northwestern.edu/olli](https://sps.northwestern.edu/olli)

**Please note:** The submission deadline for articles in the OLLI newsletter is the Monday prior to the issue in which you would like your information to appear. For events that require registration, the deadline is a minimum of 6wks prior. Inclusion is at the discretion of the Director. Send submission requests to [lee.lawlor@northwestern.edu](mailto:lee.lawlor@northwestern.edu)



